



RECP #: 752630

RECORDED 5/8/2019 AT 1:09 PM BK# 2620 PG# 1672
Debra K. Lee, CLERK OF LARAMIE COUNTY, WY PAGE 1 OF 1

STATE OF WYOMING CORNER RECORD

(In compliance with the CORNER PERPETUATION AND FILING ACT, Wyoming Statutes, 1997 Section 33-29-140, et. seq., and the Rules and Regulations of the Board of Registrations for Professional Engineers and Professional Land Surveyors)

SOUTHEAST CORNER SECTION 3, T. 18 N., R. 62 W., 6TH P.M., LARAMIE COUNTY, WYOMING

GLO: SET A SANDSTONE 16X16X6, 10IN. DEEP, MARKED WITH 5 NOTCHES ON S. SIDE AND 2 NOTCHES ON E. EDGE FOR COR. TO SEC'S 2, 3, 10, 11.

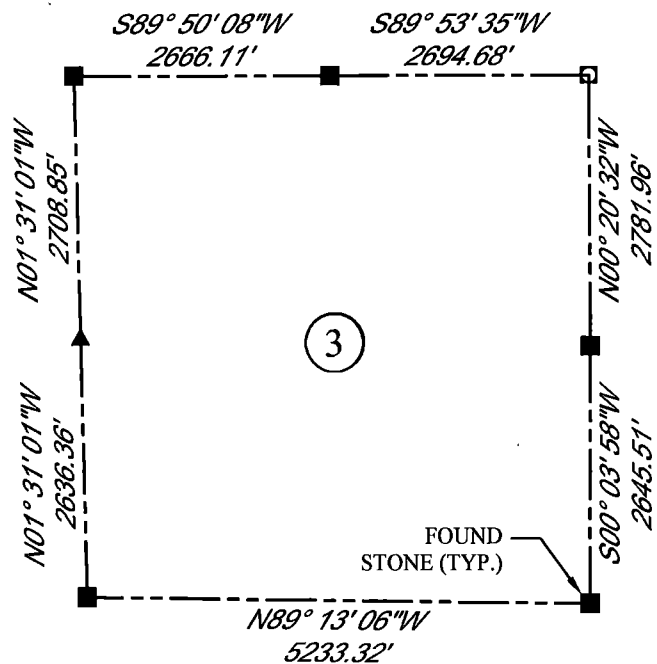
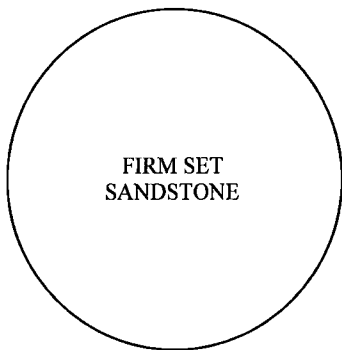
FOUND: FOUND FIRM SET SANDSTONE, 0.5FT ABOVE SURFACE. NO MARKINGS FOUND, A STEEL POST IS SET ON EAST SIDE OF THE STONE.



SCALE: NONE
NORTH DETERMINED BY
G.P.S OBSERVATIONS

FOUND: FIRM SET SANDSTONE

SET: NOTHING



LEGEND:

- FOUND BLM CAP
- FOUND USFS CAP
- FOUND STONE
- FOUND PRIVATE MONUMENT
- ◆ CALCULATED POSITION
- ▲ SET MONUMENT (LS10245)
- SECTION LINE

DATE OF FIELD WORK: 7/17/2018 OFFICE REFERENCE: MERIDEN

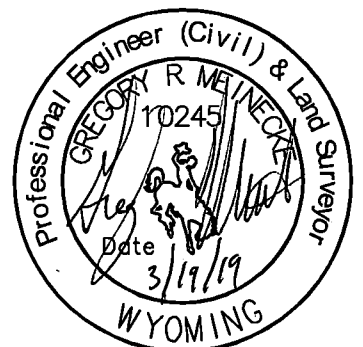
CROSS INDEX DIAGRAM

	1	2	3	4	5	6	7	8	9	10	11	12	13	14	15	16	17	18	19	20	21	22	23	24	25
A																									
B																									
C		6																							
D																									
E																									
F																									
G		7																							
H																									
J																									
K																									
L		18																							
M																									
N																									
O																									
P		19																							
Q																									
R																									
S																									
T		30																							
U																									
V																									
W																									
X		31																							
Y																									
Z																									
	1	2	3	4	5	6	7	8	9	10	11	12	13	14	15	16	17	18	19	20	21	22	23	24	25

WOOD
2615 AVIATION DRIVE
SHERIDAN, WY 82801
PH: 307-675-6400

wood.

THIS CORNER RECORD WAS
PREPARED BY ME OR UNDER
MY DIRECTION AND
SUPERVISION,
SEAL AND SIGNATURE



CORNER NAME: SOUTHEAST SECTION: 3 T. 18 N., R. 62 W. ; 6TH P.M. CROSS-INDEX # E-17
SBRPELS/PLSW: MARCH 1994; PLSW JANUARY 1998